

Bunny Rabbit



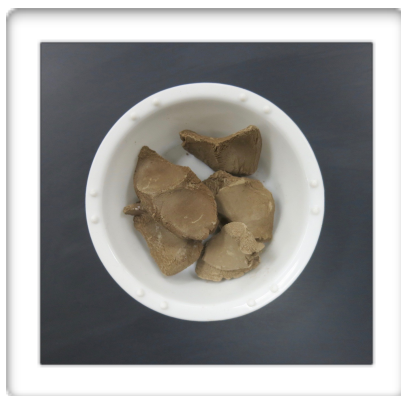
an Early Childhood
art Lesson





Step 1

Before you can start making your sculpture you need to make some clay glue. Clay glue is called slip. To make slip you break off some small grape-sized chunks of clay and let them completely dry out. You can dry your clay chunks in the sun or simply leave them in the open air overnight. When they feel dry put them into a small plastic container and add enough water to just cover the clay. The clay will break down as it absorbs the water. This process is called slaking. When the clay is done absorbing the water it will look soft and mushy. This mushy stuff is called slip and it is applied between clay pieces to glue them together.



Tools

Once you have the clay slip made, the only other tool you will need is something pointed like a skewer or sharpened pencil.



Step 2

Make one large form shaped like a potato for the body of the rabbit.

Step 3

Make two small cylinders for the legs.





Step 4

Add some clay slip to one side of the large form.

Join on the legs.



Smooth the legs onto the body using your finger.

Step 5

To make the back legs, start by rolling two grape size spheres. Using your hand to pull out the back feet.



Step 6

Add the back legs using some clay slip.



side view



top view

Step 7

Roll a medium size potato form for the head and attach it to the body using some clay slip.



Step 8

Roll three pea size spheres.



Attach the small spheres to make the rabbit's eyes and nose.



Use the pointed tool to make the rabbit's eyeballs.



Step 9

Use two small lumps of clay to squeeze out two long gestural ears for the rabbit.



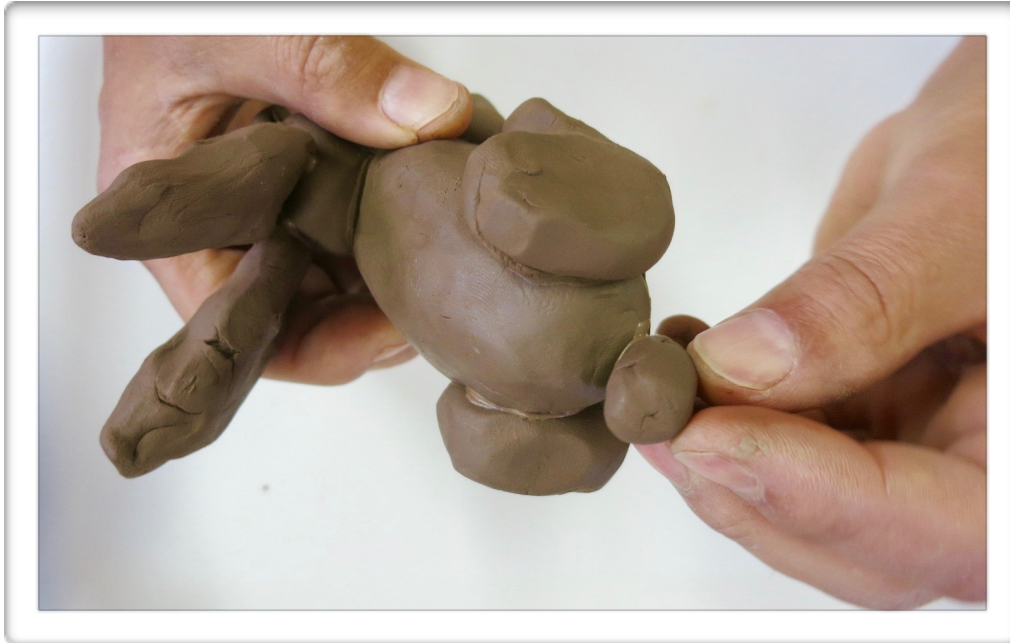
Then indent each ear with the pointed tool.

Securely attach each ear using the clay slip.



Step 10

Use a small pinch of clay to make a tail for the rabbit. Attach it to the rear of the body using the clay slip.



Step 11

Draw the rabbit's nails using the pointed tool.



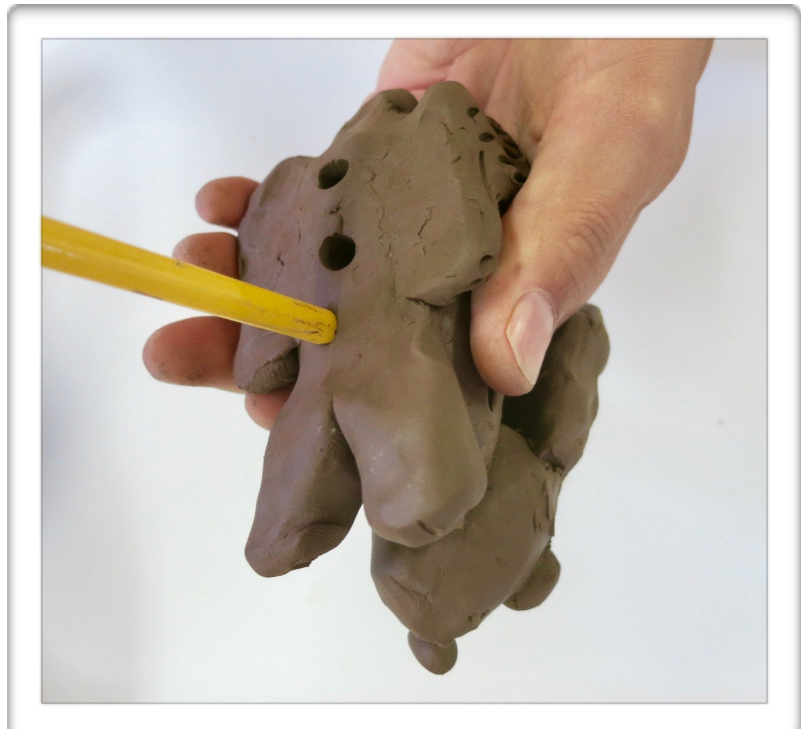
Step 12

The rabbit's fur texture can be added using the pointed tool as well.



Step 13

To help fully dry the clay from the inside out, poke a few holes into the bottom of the rabbit's body. This will aid in the firing process.



Step 14

Allow the sculpture to fully dry to a leather hard state. Once dry, fire in the kiln to bisque ware.



The Blackjack Clay fires to a light buff / tan color.



Step 14

Glaze the sculpture using a cone 6 - 10 glaze.



Step 15

Fire in the kiln.



Your Bunny Rabbit is complete!



Cone 6 - 8 Glaze



John Post's Calcium Matte

Kentucky OM #4	30.20
Frit 3134	5.70
Nepheline syenite	32.50
Wollastonite	16.30
Whiting	4.90
Flint	10.40

	100.00
 Titanium dioxide	 3.50
Red iron oxide	9.00
Cobalt carbonate	2.00