

Ллама Мамма



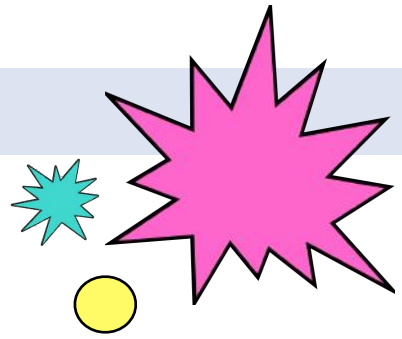
an Early Childhood
art Lesson



Preparing the Clay

Start by making these forms:

- 1 extra large and thick cylinder
- 1 large cylinder
- 4 medium cylinders
- 2 small cylinders
- 3 tiny cylinders
- 1 large form like a potato
- 2 pea sized spheres

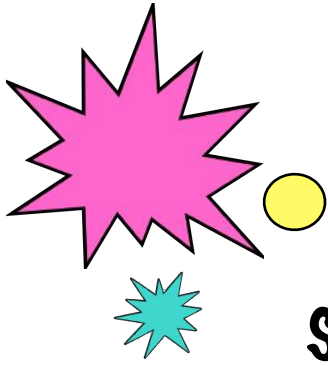


Step 1

Body

Join the large potato like form to the extra large cylinder by scoring and slipping the two pieces together.





Step 2

Neck

Smooth the neck onto the body with your finger.

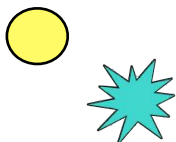


Step 3

Head

Attach the large cylinder to the neck and smooth both pieces together.

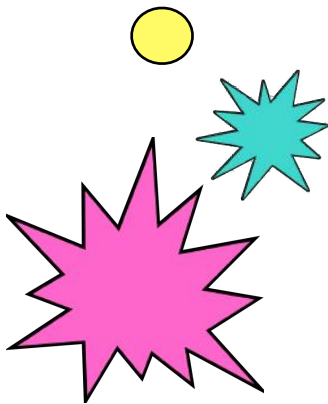
Pinch the end of the large cylinder until it becomes pointy looking.



Step 4

Legs

Attach the 4 medium cylinders to the body to create the legs. Once the legs are attached, turn the body right side up and get it to stand on its own by gently rocking it back and forth to balance it.



Step 5

Tail

Attach one of the small cylinders to the rear and slightly pinch the end to make it a little pointy.

Step 6

Ears

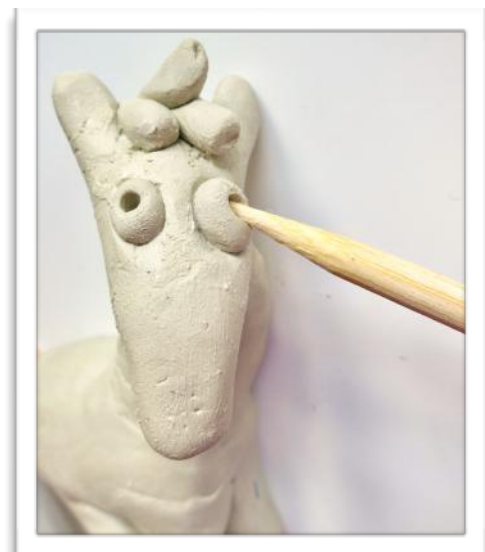
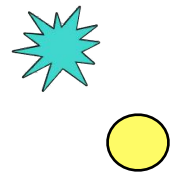
Divide the other small cylinder in half and join the two pieces to the head. Slightly pinch the ends to make the ears pointy.



Step 7

Hair

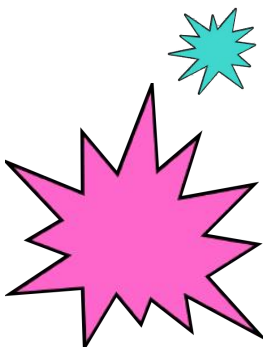
Attach the 3 tiny cylinders in between the two ears to create the animal's hair.



Step 8

Eyes

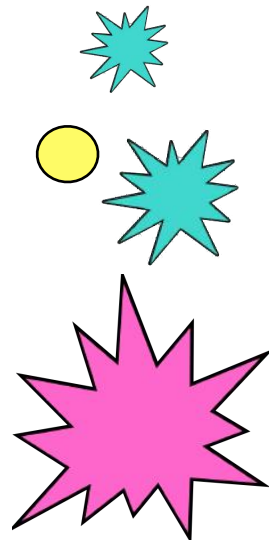
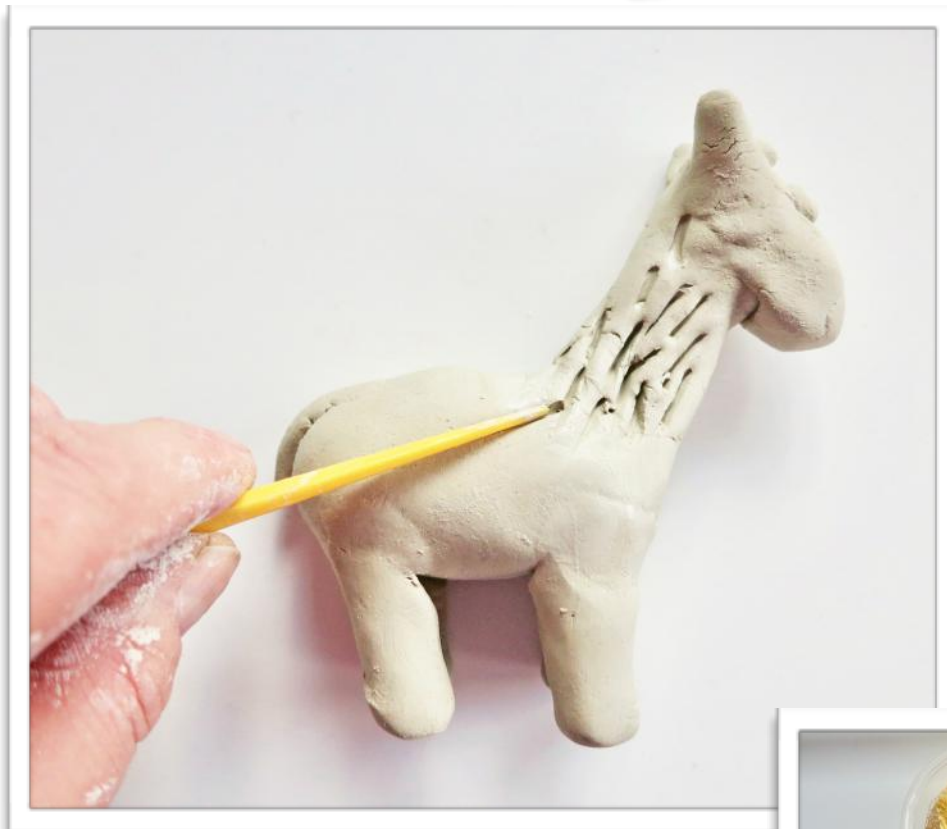
Attach the two tiny spheres onto the head and poke each one in the middle using a pointed tool.



Step 9

Nose

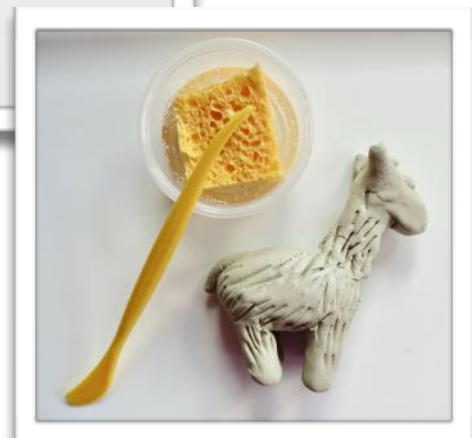
Draw a letter Y on the end of the head to create the nose.



Step 10

Fur

Use a pointed tool to indent lines onto the body of the animal to create the fur. Keep the water bowl close by to add a drop or two to smooth out the lines if needed.



Step 11

Dry

Allow the clay sculpture to dry for 24 hours before painting.



Step 12

Paint

Add some black paint to the small details. A colorful blanket made from a scrap of fabric may be added for a little bit of whimsy.

