



## Where Am I? Three-Dimensional Topographic Mapping

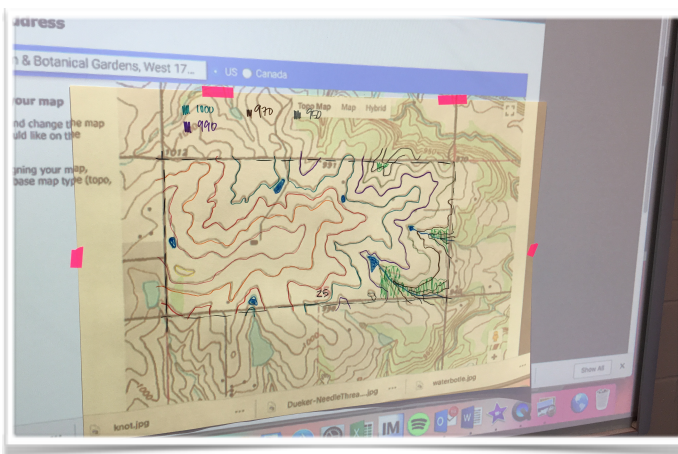
Created by Polly Blair, Elementary Visual Art Teacher at Wolf Springs Elementary, Overland Park, Kansas

### **Big Idea:** Place

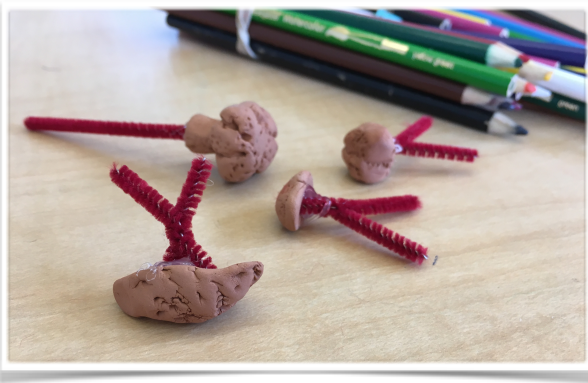
How can I express where I physically am in the world in a three-dimensional way?

This STEAM-inspired lesson addresses many elementary Social Studies standards, as well as the “Responding” National Art Standard: Perceive and describe aesthetic characteristics of one’s natural world and constructed environments. (Re7.1.2a)

### **Steps:**



I used a United States topographical map services to locate a place that is important in my life. Our school is new this year and I used the topography of our school’s location as inspiration. Using my SmartBoard, I traced the elevation of our school.



To emphasize the forested areas surrounding our school, I used Activ-Clay to make a mold. Using Insta-Mold, I made a mold of the generic bushes and trees for my three-dimensional map.

I poured Perma-Stone into the mold to make multiple copies of the bushes and trees. When they dried, I used tempera paint to paint them.

I found that it was easier to put the small parts out of the mold by gently pushing a pipe cleaner into the mold before it set.



To make the steps and elevations of the topography, I traced each elevation on tracing paper and then used an X-Acto knife to cut the elevation out of cardboard.

Using a mix of white tempera paint and Glue-All, I painted the parts of the map with glue and dusted each level with a different color of Scenic Sand. In one case I was able to mix two colors together to achieve a new color.

Once the layers were coated with sand, I glued them together with Glue-All and painted in ponds. The last step was to glue on the painted PermaStone molded vegetation.

